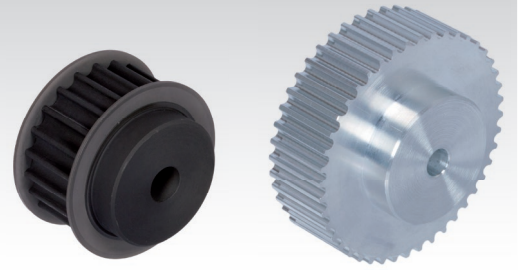
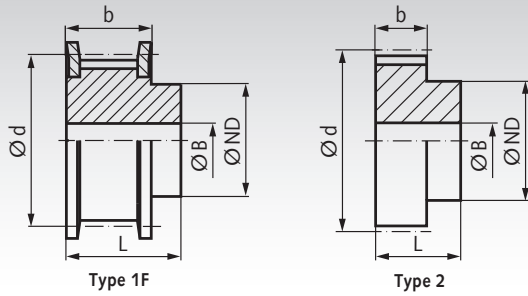


## HTD Pulleys Profile 5M



**Material:** Up to a teeth number of 40 phosphated steel, from a teeth number of 44 aluminium similar to EN AW2017A.

These HTD pulleys are manufactured pitch-true with special cutters. This leads to a precise meshing of teeth.

### Profile 5M, Timing Belt Width 9 mm

Number of teeth	Type	Outside Ø		d mm	ND mm	b mm	L mm	Pilot Hole B mm	Custom Bore B max. mm	Weight g
		Pulley mm	Flange mm							
12	1F	17,95	23	19,10	12,5	14,5	20,0	6	8,0	27
14	1F	21,14	25	22,28	13,5	14,5	20,0	6	9,0	34
15	1F	22,73	28	23,87	16,0	14,5	20,0	6	10,0	44
16	1F	24,32	28	25,46	16,5	14,5	20,0	6	10,5	49
17	1F	25,91	32	27,06	18,0	14,5	20,0	6	12,0	61
18	1F	27,50	32	28,65	20,0	14,5	20,0	6	12,5	69
20	1F	30,69	36	31,83	23,0	14,5	22,5	6	13,5	96
21	1F	32,28	38	33,42	24,0	14,5	22,5	6	14,0	108
22	1F	33,87	38	35,01	25,5	14,5	22,5	6	15,0	118
24	1F	37,05	42	38,20	27,0	14,5	22,5	6	16,0	142
25	1F	38,64	44	39,79	28,5	14,5	22,5	6	17,0	158
26	1F	40,24	44	41,38	30,0	14,5	22,5	6	18,0	168
28	1F	43,42	48	44,56	30,5	14,5	22,5	6	18,0	192
30	1F	46,60	51	47,75	35,0	14,5	22,5	6	21,0	232
32	1F	49,79	54	50,93	38,0	14,5	22,5	8	23,0	267
34	1F	52,97	60	54,11	38,0	14,5	22,5	8	23,0	301
36	1F	56,15	60	57,30	38,0	14,5	22,5	8	23,0	325
40	1F	62,52	71	63,66	38,0	14,5	22,5	8	23,0	396
44	2	68,88	-	70,03	38,0	14,5	25,5	8	23,0	142
48	2	75,25	-	76,39	45,0	14,5	25,5	8	28,0	179
52	2	81,62	-	82,76	45,0	14,5	25,5	8	28,0	245
60	2	94,35	-	95,49	45,0	14,5	25,5	8	28,0	227
72	2	113,45	-	114,59	45,0	14,5	25,5	8	28,0	281
80	2	126,18	-	127,32	60,0	14,5	25,5	10	38,0	570
90	2	142,10	-	143,24	75,0	14,5	25,5	10	50,0	752

### Profile 5M, Timing Belt Width 15 mm

Number of teeth	Type	Outside Ø		d mm	ND mm	b mm	L mm	Pilot Hole B mm	Custom Bore B max. mm	Weight g
		Pulley mm	Flange mm							
12	1F	17,95	23	19,10	12,5	20,5	26	6	8,0	37
14	1F	21,14	25	22,28	13,5	20,5	26	6	9,0	46
15	1F	22,73	28	23,87	16,0	20,5	26	6	10,0	60
16	1F	24,32	28	25,46	16,5	20,5	26	6	10,5	64
17	1F	25,91	32	27,06	18,0	20,5	26	6	12,0	80
18	1F	27,50	32	28,65	20,0	20,5	26	6	12,5	89
20	1F	30,69	36	31,83	23,0	20,5	26	6	13,5	118
21	1F	32,28	38	33,42	24,0	20,5	26	6	14,0	130
22	1F	33,87	38	35,01	25,5	20,5	26	6	15,0	144
24	1F	37,05	42	38,20	27,0	20,5	28	6	16,0	181
25	1F	38,64	44	39,79	28,5	20,5	28	6	17,0	203
26	1F	40,24	44	41,38	30,0	20,5	28	6	18,0	215
28	1F	43,42	48	44,56	30,5	20,5	28	6	18,0	252
30	1F	46,60	51	47,75	35,0	20,5	28	6	21,0	298
32	1F	49,79	54	50,93	38,0	20,5	28	8	23,0	344
34	1F	52,97	60	54,11	38,0	20,5	28	8	23,0	389
36	1F	56,15	60	57,30	38,0	20,5	28	8	23,0	420
40	1F	62,52	71	63,66	38,0	20,5	28	8	23,0	467
44	2	68,88	-	70,03	38,0	20,5	30	8	23,0	182
48	2	75,25	-	76,39	38,0	20,5	30	8	23,0	198
52	2	81,62	-	82,76	45,0	20,5	30	8	28,0	320
60	2	94,35	-	95,49	50,0	20,5	30	8	30,0	312
72	2	113,45	-	114,59	50,0	20,5	30	8	30,0	387
80	2	126,18	-	127,32	60,0	20,5	30	10	38,0	754
90	2	142,10	-	143,24	75,0	20,5	30	10	50,0	988